

PROLEC



www.prolecge.com

TRANSFORMER

SERIAL No G2167-___, THREE-PHASE, 60 Hz, ALTITUDE 3300 ft

VOLTAGE RATING

138 000 GrdY/79 675 X 69 000 GrdY/39 835 - 13 800

kVA RATING 60 000 CONTINUOUS @ 65 °C RISE ONAN

kVA RATING 80 000 CONTINUOUS @ 65 °C RISE ONAF

kVA RATING 100 000 CONTINUOUS @ 65 °C RISE ONAF

BASIC IMPULSE LEVEL (kV)

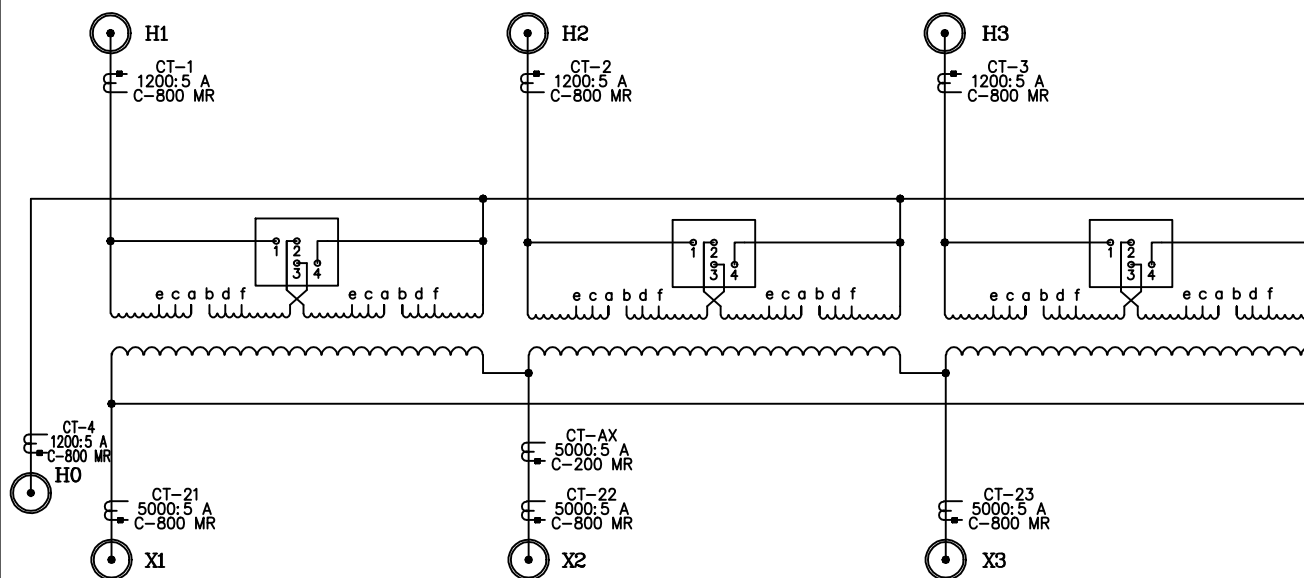
	H1,H2,H3		X1,X2,X3	H0
	SERIES	PARALLEL		
BUSHING	650	650	150	150
WINDING	650	350	150	150

APPROXIMATE WEIGHTS (POUNDS)

CORE AND COILS	114020
TANK AND FITTINGS	53855
MAIN TANK LIQUID (11575 GALS)	86930
COOLING EQUIPMENT LIQUID (360 GALS)	2690
CONSERVATOR TANK LIQUID (510 GALS)	3835
TOTAL WEIGHT	261330
UNTANKING WEIGHT (HEAVIEST PIECE)	114020
SHIPPING WEIGHT	149770

IMPEDANCE @ 85 °C

%Z	kVA BASE	kV BASE
	60 000	69 - 13.8
	60 000	138 - 13.8



HIGH VOLTAGE WINDING (SERIES)

VOLTS	AMPERES	DE-ENERGIZED TAP CHANGER		DUAL-VOLTAGE BOARD
		TAP	CONNECTS	CONNECTS
H1, H2, H3	100 000 kVA			
144 900	399	1	a TO b	2 TO 3
141 450	408	2	b TO c	
138 000	419	3	c TO d	
134 550	429	4	d TO e	
131 100	441	5	e TO f	

HIGH VOLTAGE WINDING (PARALLEL)

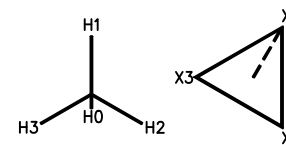
VOLTS	AMPERES	DE-ENERGIZED TAP CHANGER		DUAL-VOLTAGE BOARD
		TAP	CONNECTS	CONNECTS
H1, H2, H3	100 000 kVA			
72 450	797	1	a TO b	1 TO 2 3 TO 4
70 725	816	2	b TO c	
69 000	837	3	c TO d	
67 275	858	4	d TO e	
65 550	881	5	e TO f	

CAUTION !

- BEFORE INSTALLING OR OPERATING READ INSTRUCTIONS G2167
- DO NOT OPERATE TRANSFORMER WHEN THE READING OF LIQUID LEVEL GAUGE IS BELOW THE LOW POINT OF THE SCALE.
- DO NOT OPERATE DE-ENERGIZED TAP CHANGER OR DUAL VOLTAGE BOARD WITH THE TRANSFORMER ENERGIZED.

LOW VOLTAGE WINDING

VOLTS	AMPERES
X1, X2, X3	100 000 kVA
13 800	4185



NOTES

- MAXIMUM OPERATING PRESSURES OF LIQUID PRESERVATION SYSTEM: 0 Lbf/in² (ATMOSPHERIC PRESSURE).
- TANK DESIGNED FOR 15 Lbf/in² VACUUM FILLING
- ALL WINDINGS COPPER.
- FILLED WITH MINERAL OIL WHICH CONTAIN NO DETECTABLE LEVEL OF PCB AT THE TIME OF MANUFACTURE.

SUITABLE FOR STEP-UP OPERATION

MANUFACTURE DATE: ___ / 20 ___



TRANSFORMER DESIGNED FOR A NOMINAL IMPEDANCE OF 9.50 % @ 60 000 kVA THE ACTUAL MEASURED IMPEDANCE VALUE WILL BE SHOWN ON THE NAMEPLATE.

MATERIAL: STAINLESS STEEL
DIMENSIONS: 22" x 12"

PROLEC
APPROVAL SIGNATURE
DATE: 05/10
WE HAVE TO SIGN YOU, BUTTER
AND SIGN BACK WITH YOUR
OFFICIAL SEAL AND SIGNATURE
ON THE BOTTOM OF THE SHEET
THE DATE WRITTEN IN THIS SPACE

EQUI SALES ASSOCIATES, INC.
13811 Cullen Blvd
HOUSTON, TX
P.O. : P2009-052
GE Ref: 420-JB001
PROLEC GE Serial N° : G2167-06

STEP UP TRANSFORMER
60/80/100 MVA, 65°C, ALTITUDE: 3300 FASL
ONAN/ONAF/ONAF, 3ø, 60 Hz
138/79.674 kV x 69/39.837 kV Y 13.8 kV

REV.	DATE	BY	CHKD.	APP.	DESCRIPTION
1					
2					
3					
4					

Sheet 1 of 1
Rev: 0

NAMEPLATE

PROLEC

Drawing No. G216706D802

Scale: 1:1

Sec: 80