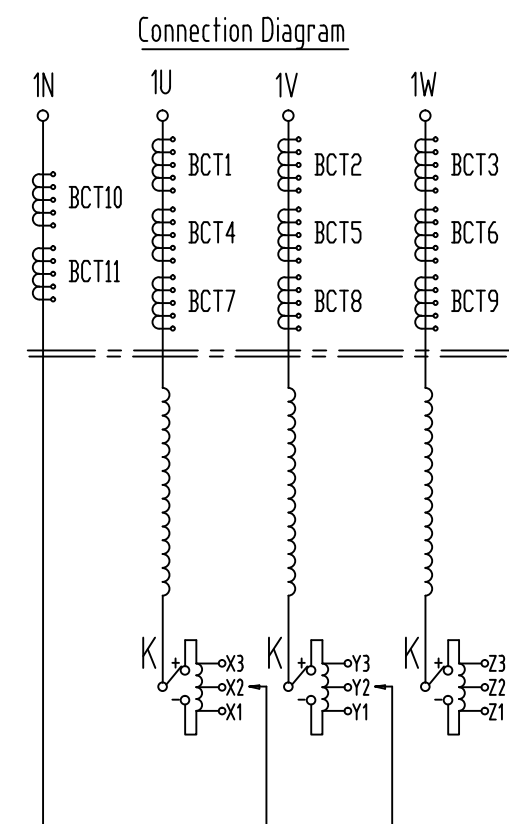


**CHNT** The People's Republic of China  
Chint Electric Co., Ltd

# Power Transformer

H.V.(75MVA)					
Tap position	Tap	Range switch	Voltage (V)	Current (A)	connection
1	+5%	K+	120750	358.6	X1-Y1-Z1
2	+2.5%	K+	117875	367.35	X2-Y2-Z2
3	0	K+	115000	376.53	X3-Y3-Z3
4	-2.5%	K-	112125	386.19	X2-Y2-Z2
5	-5%	K-	109250	396.35	X3-Y3-Z3
L.V.(75MVA)					
Voltage (V)			Current (A)		
13800			3137.77		

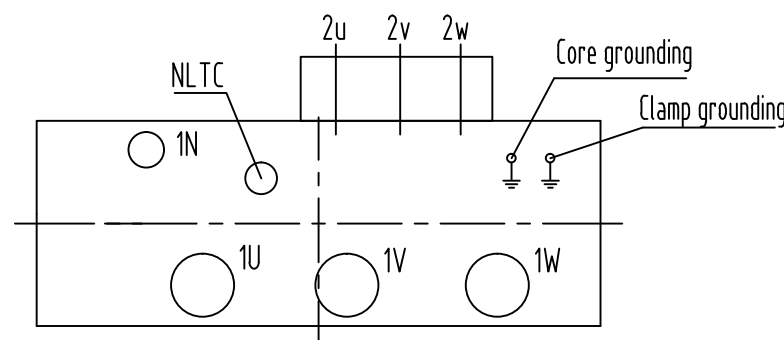
Type	SF-75000/115		Standard	IEEE C57.12.00-2010 IEEE C57.12.90-2010
Rated Power (MVA)	75			
	H.V	L.V		
Rated voltage (kV)	115	13.8	Product Series No.	1ZDB300000P-
Rated current (A)	376.53	3137.77	Rated Frequency	60Hz
Connection symbol	YNd11		No. of Phases	3
Altitude	1000m		Mechanical strength of Tank	
Type of Cooling	ONAN/ONAF1/ONAF2(45/60/75MVA)		Vacuum degree	Positive pressure
Transformer insulation heat resistance level	A		33Pa	98kPa
Max. ambient air temperature	40℃		Year of Manufacturer	Year <input type="text"/> Month <input type="text"/>
Temperature rise limits of Winding/Top oil	65K/55K		Manufacturer's Serial No.	<input type="text"/>



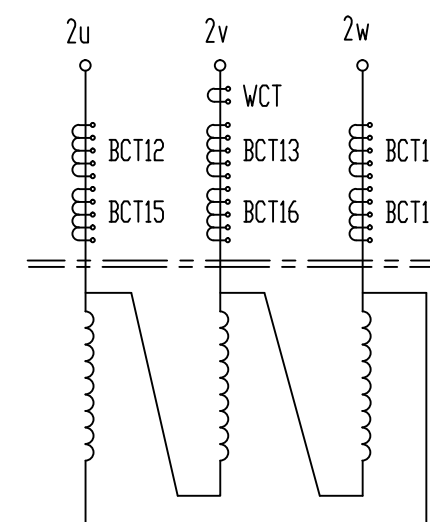
Insulation level	
H.V Line Terminal(115kV)	LI/AC 450/180 kV
H.V.neutral point terminal	LI/AC 170/70 kV
L.V. Line terminal(13.8kV)	LI/AC 110/45 kV

Voltage combination (kV-kV)	Power (MVA)	Load loss (kW)	Impedance (%)
H.V-L.V(115-13.8)	75	<input type="text"/>	<input type="text"/>
No-load current (%)		<input type="text"/>	
No-load loss (kW)		<input type="text"/>	
Sound level (dB)		Max.≤ 75 dB (Transformers 2 meters distance)	

Approximately Mass (kg)	
Active part	47800
Cover	1700
Tank & Accessories	17300
Insulating Oil	16000
Transportation (With Dry air)	56600
Total	80900



Caution: When transformer operates, core and clamp must be reliably earthed.



285  
300

242.5

500

242.5

Technical requirements:

- Font: product name No.14, company name No.10, boldface, others No.5 imitated Sung font;
- Except table name and company name, other letters and numbers' sizes are controlled ±1;
- Word line concave, black varnish, back keep stainless steel neutral color;
- Thickness of plate is 1mm.
- All loss figure shall be no more than guaranteed figures.

- All words, symbols, lines are black, paint color RAL9016;
- Inside table line width 0.25.
- No load current, Sound level, No load loss, load loss, short circuit impedance imprinted as per approved test values.

REVO	20140912	SF-75000/115	1ZDB107001D-1271
Design	wang	20140911	Nameplate
Check	zhu	20140911	
Review	zhu	20140911	Mexico
Approve	zhong	20140911	
		Mark	Weight
		Scale	
		1:1	
		Total: 1 Pages	Page 1
		<b>CHNT</b> Chint Electric Co., Ltd	