

PROLEC



www.prolecge.com

TRANSFORMER

SERIAL No G2579- ___, THREE-PHASE, 60 Hz, ALTITUDE 3300 ft

VOLTAGE RATING	
138 000Y/79 675 X 69 000Y/39 840 - 18 000	
kVA RATING 138 000 CONTINUOUS @ 65 °C RISE ONAN	
kVA RATING 184 000 CONTINUOUS @ 65 °C RISE ONAF	
kVA RATING 230 000 CONTINUOUS @ 65 °C RISE ONAF	

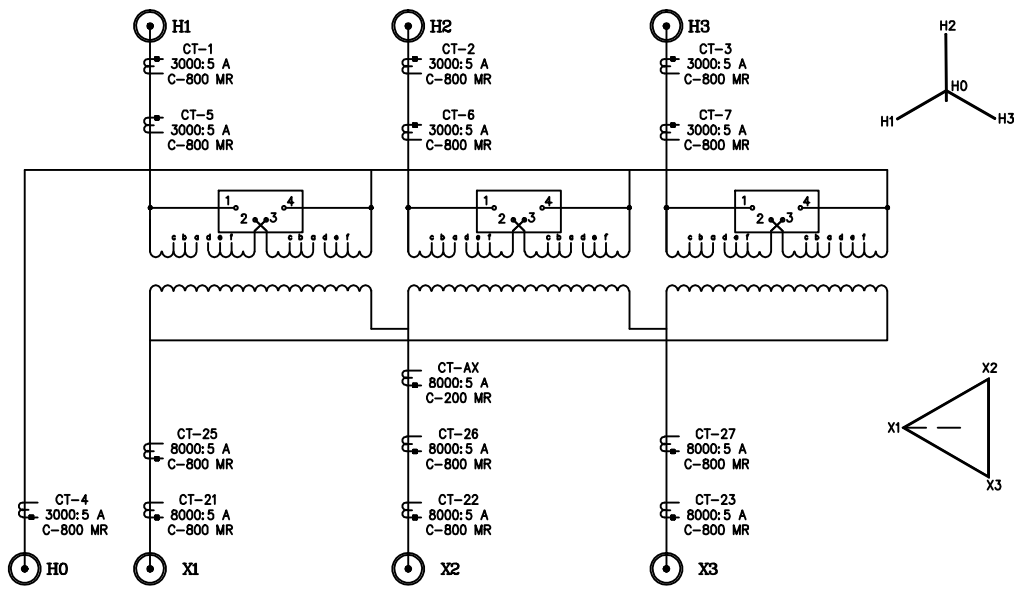
APPROXIMATE WEIGHTS (POUNDS)	
CORE AND COILS	210475
TANK AND FITTINGS	89395
MAIN TANK LIQUID (16939 GALS)	127215
COOLING EQUIPMENT LIQUID (919 GALS)	6900
CONSERVATOR TANK LIQUID (715 GALS)	5375
TOTAL WEIGHT	439360
UNTANKING WEIGHT (HEAVIEST PIECE)	210475
SHIPPING WEIGHT (WITHOUT OIL)	261870

IMPEDANCE @ 85 °C		
%Z	kVA BASE	kV BASE
	138 000	138 - 18
	138 000	69 - 18

BASIC IMPULSE LEVEL (kV)				
	H1,H2,H3		H0	X1,X2,X3
BUSHING	650	650	150	150
WINDING	650	350	150	150

TRANSFORMER DESIGNED FOR A NOMINAL IMPEDANCE OF 11.5 % @ 138000 KVA THE ACTUAL MEASURED IMPEDANCE VALUE WILL BE SHOWN ON THE NAMEPLATE.

MATERIAL: STAINLESS STEEL PS
DIMENSIONS: 20" x 12"



HV WINDING (PARALLEL CONNECTION 69 KV)				
VOLTS	AMPERES	DE-ENERGIZED TAP CHANGER POS.	CONNECTS	DUAL-VOLTAGE BOARD CONNECTS
H1, H2, H3	230 000 KVA			
72 450	1 835	1	a TO d	1 - 2
70 730	1 875	2	d TO b	
69 000	1 925	3	b TO e	3 - 4
67 280	1 975	4	e TO c	
65 550	2 025	5	c TO f	

HV WINDING (SERIES CONNECTION 138 KV)				
VOLTS	AMPERES	DE-ENERGIZED TAP CHANGER POS.	CONNECTS	DUAL-VOLTAGE BOARD CONNECTS
H1, H2, H3	230 000 KVA			
144 900	916	1	a TO d	2 - 3
141 450	939	2	d TO b	
138 000	962	3	b TO e	
134 550	987	4	e TO c	
131 100	1 015	5	c TO f	

LOW VOLTAGE WINDING	
VOLTS	AMPERES
X1, X2, X3	230 000 KVA
18 000	7 380

- CAUTION !**
- BEFORE INSTALLING OR OPERATING READ INSTRUCTIONS G2579
 - DO NOT OPERATE DE-ENERGIZED TAP CHANGER WITH THE BELOW OF THE LOW TRANSFORMER ENERGIZED.
 - DO NOT OPERATE DE-ENERGIZED TAP CHANGER OR DUAL VOLTAGE BOARD WITH THE TRANSFORMER ENERGIZED.

- NOTES**
- MAXIMUM OPERATING PRESSURES OF LIQUID PRESERVATION SYSTEM: 0 Lbf/in² (ATMOSPHERIC PRESSURE).
 - TANK DESIGNED FOR 15 Lbf/in² VACUUM FILLING
 - ALL WINDINGS COPPER.
 - FILLED WITH MINERAL OIL WHICH CONTAIN NO DETECTABLE LEVEL OF PCB AT THE TIME OF MANUFACTURE.

MANUFACTURE DATE: ___/ 2 0 1 ___



PROLEC

APPROVAL DRAWING

08/13/10

WE WANT YOUR CUSTOMER LETTER AND SEND BACK WITH YOUR COMMENTS AND SIGNATURE WITHIN 15 DAYS AFTER THE DATE MARKED IN THIS STAMP.

EQUI-SALES ASSOCIATES, INC.
P.O. N°: P2010-065
GE REG. N°: 420-8B009
GE PROLEC SERIAL N°: G2579-01
SUBSTATION-01 EQUI-SALES STOCK UNITS

GENERATOR STEP UP TRANSFORMER
ONAN/ONAF/ONAF. 138/184/230 MVA
60 HZ. THREE PHASE. 65°C. 3300 FASL.
138/79.674 X 69/39.837 kV A - 18 kV A

REV	DESCRIPTION
DESIGN GROUP	1
<p>PROLEC PROLEC GE ENGINEERING POWER DIVISION http://www.prolecge.com</p>	
<p>THIS DRAWING CONTAINS PROPRIETARY INFORMATION WHICH CAN NOT BE REPRODUCED WITHOUT PERMISSION OF PROLEC GE.</p>	
DEFINITION:	ROM
CHKD:	FGG
DATE:	07/30/10
DRAWING NO.:	G257901D802
SHEET:	1 of 1